

# Staff Benefits

## for Support Practitioners

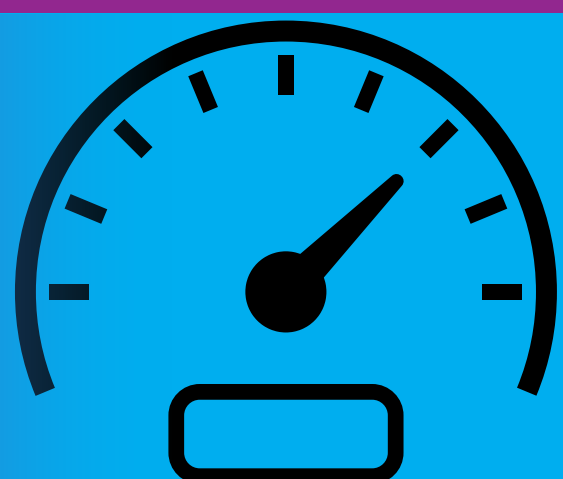
We believe social care is a career and not just a job. That is why we offer a range of great staff benefits.



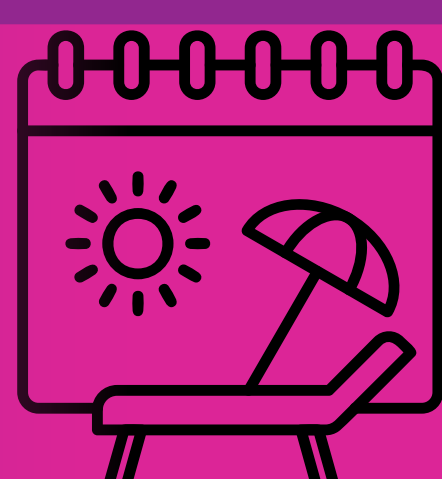
**£26,668 – £28,353** per annum (pro rata) / **£13.75 – £14.50** based on qualifications, skills and experience



**Anti-social hours** enhancement of **up to £1,272** per annum, when undertaking waking night shifts (11pm-7am)



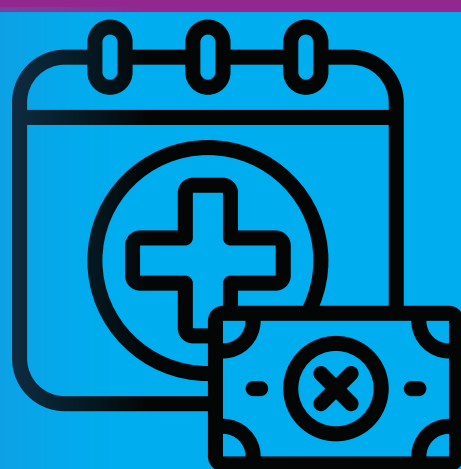
**Mileage** payment of **45p per mile.**



**.35 days holiday** per year, **increasing to 40 days** with length of service.



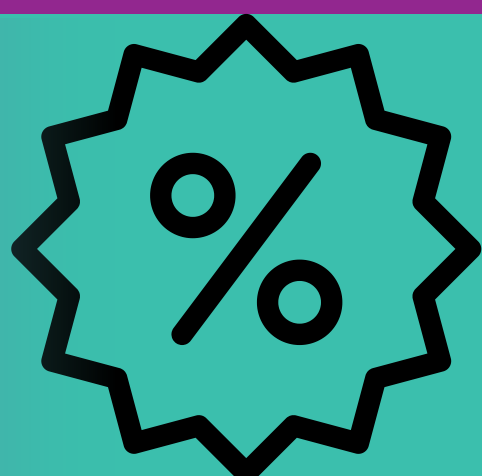
**£200 Recommend A Friend scheme** (T&Cs apply)



**Enhanced leave** for maternity, paternity, adoption and sickness.



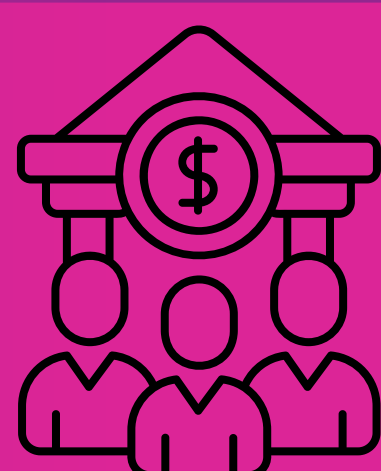
A **Defined Contribution pension scheme**, with incremental employer contributions



**Free Blue Light Card** (giving access to thousands of discounts and promotions)



Access to the **Carr Gomm App**, which includes free **physiotherapy** and **counselling.**



Membership of a **credit union**



**Cycle to work scheme; and more!**