

Staff Benefits

for Support Practitioners

We believe social care is a career and not just a job. That is why we offer a range of great staff benefits.



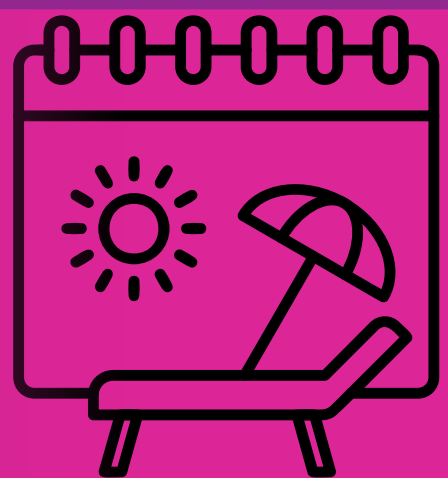
£26,668 – £28,353 per annum (pro rata) / **£13.75 – £14.50** based on qualifications, skills and experience



Anti-social hours enhancement of **up to £1,272** per annum, when undertaking waking night shifts (11pm-7am)



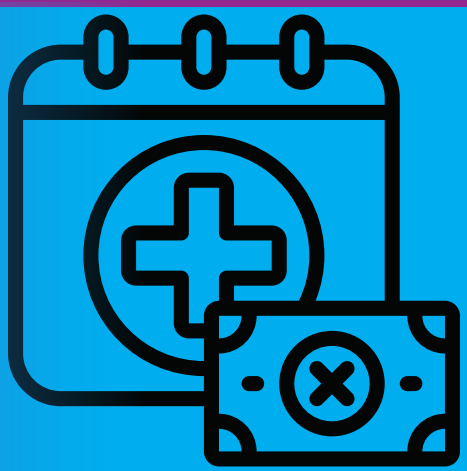
Enhanced **mileage** payment of **45p per mile.**



.35 days holiday per year, **increasing to 40 days** with length of service.



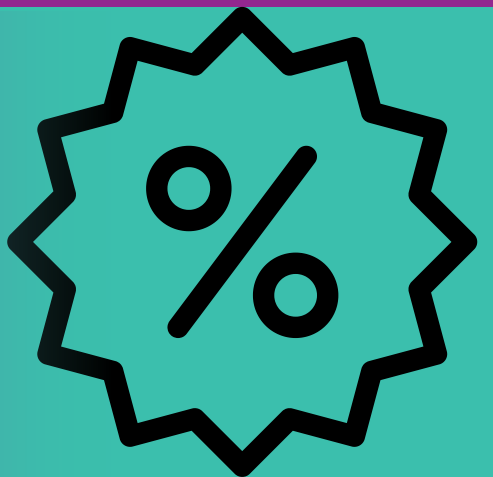
£200 Recommend A Friend scheme (T&Cs apply)



Enhanced leave for maternity, paternity, adoption and sickness.



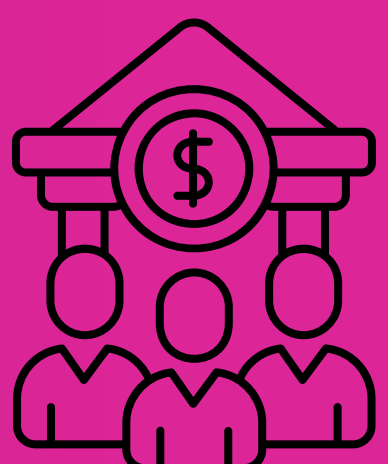
A **Defined Contribution pension scheme**, with incremental employer contributions



Free Blue Light Card (giving access to thousands of discounts and promotions)



Access to the **Carr Gomm App**, which includes free **physiotherapy** and **counselling.**



Membership of a **credit union**



Cycle to work scheme; and more!