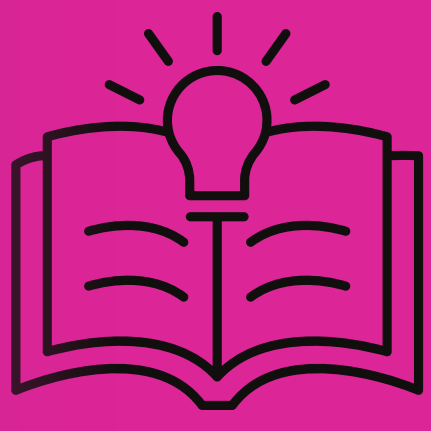


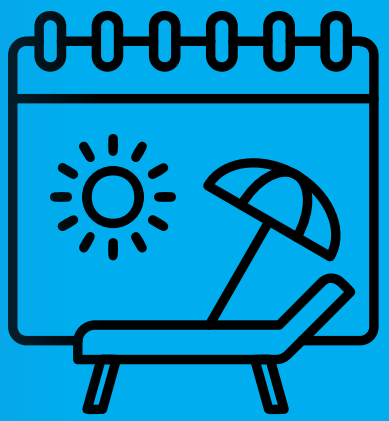
Staff Benefits

for Support Practitioners

We believe social care is a career and not just a job. That is why we offer a range of great staff benefits.



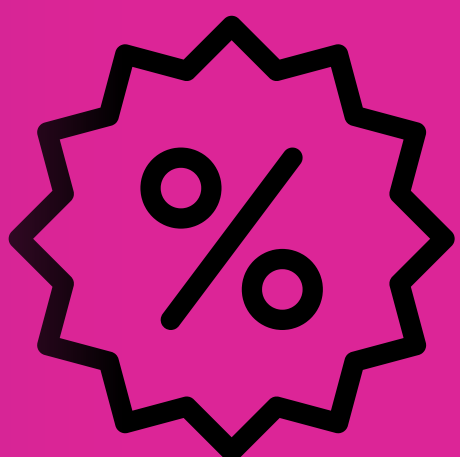
Fully-funded SVQ. Mandatory training completed in paid work time and access to **Career Development programmes.**



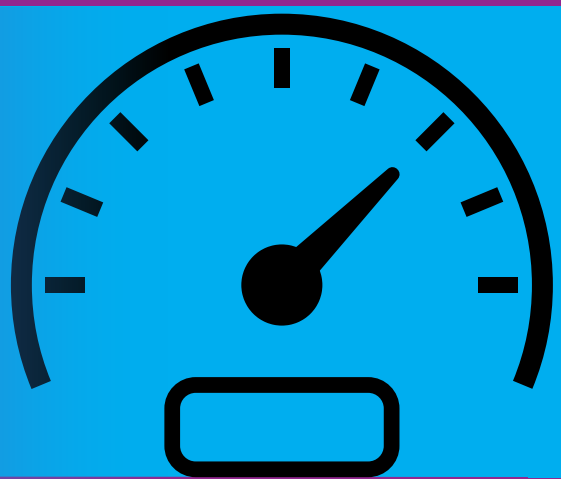
Up to **40 days holiday** per year (pro rata) based on years of service and a **sell-back annual leave** scheme.



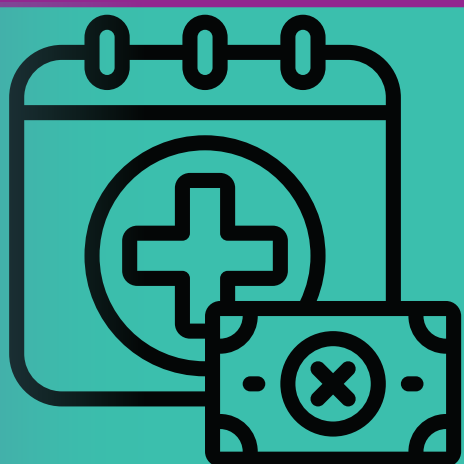
Anti-social hours payment of **up to £1241** when undertaking waking night shifts (11pm-7am).



Access to **discount schemes**, including **Blue Light Card** and **Concerts for Carers.**



Enhanced **mileage** payment of **45p per mile.**



Enhanced leave for maternity, paternity, adoption and sickness.



Access to the **Carr Gomm App**, which includes access to online **physiotherapy, health coaching** and **counselling.**