

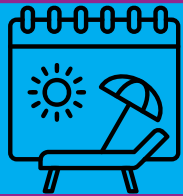


Staff Benefits

We believe social care is a career and not just a job. That is why we offer a range of great staff benefits.



Fully-funded SVQ, with all training included in paid work time



35+ days holiday per year and a **sell-back annual leave** scheme.



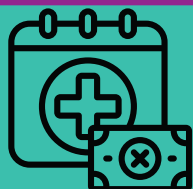
Anti-social hours payment of **up to £1209** when undertaking waking night shifts (11pm-7am).



Time and a half payment for hours worked over 37.5 hours per week (averaged over the month).



Additional mileage payment of **45p per mile**.



Enhanced leave for maternity, paternity, adoption and sickness.

Visit our website for more staff benefits